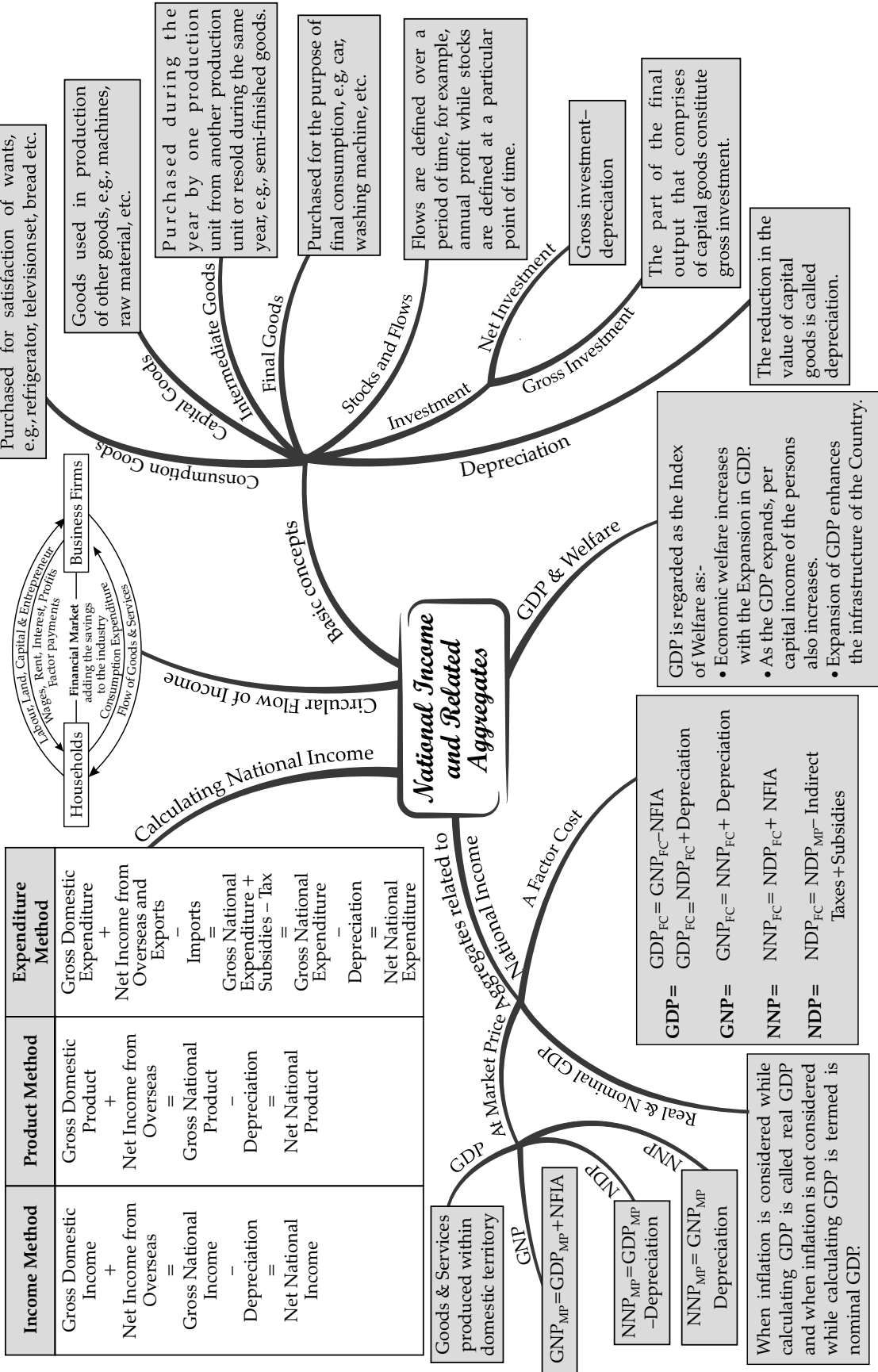
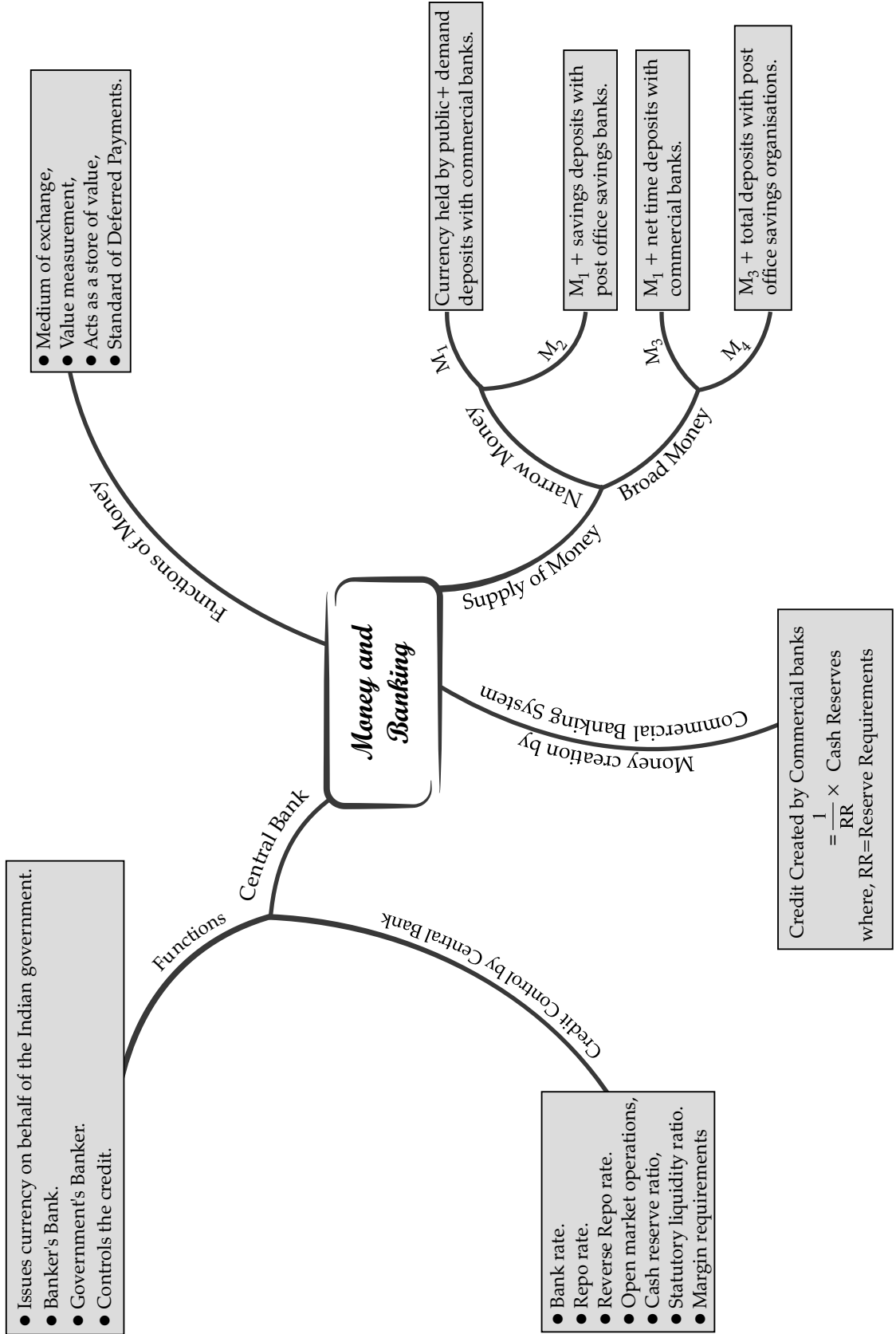


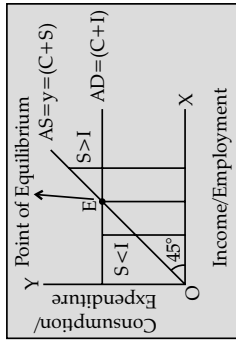
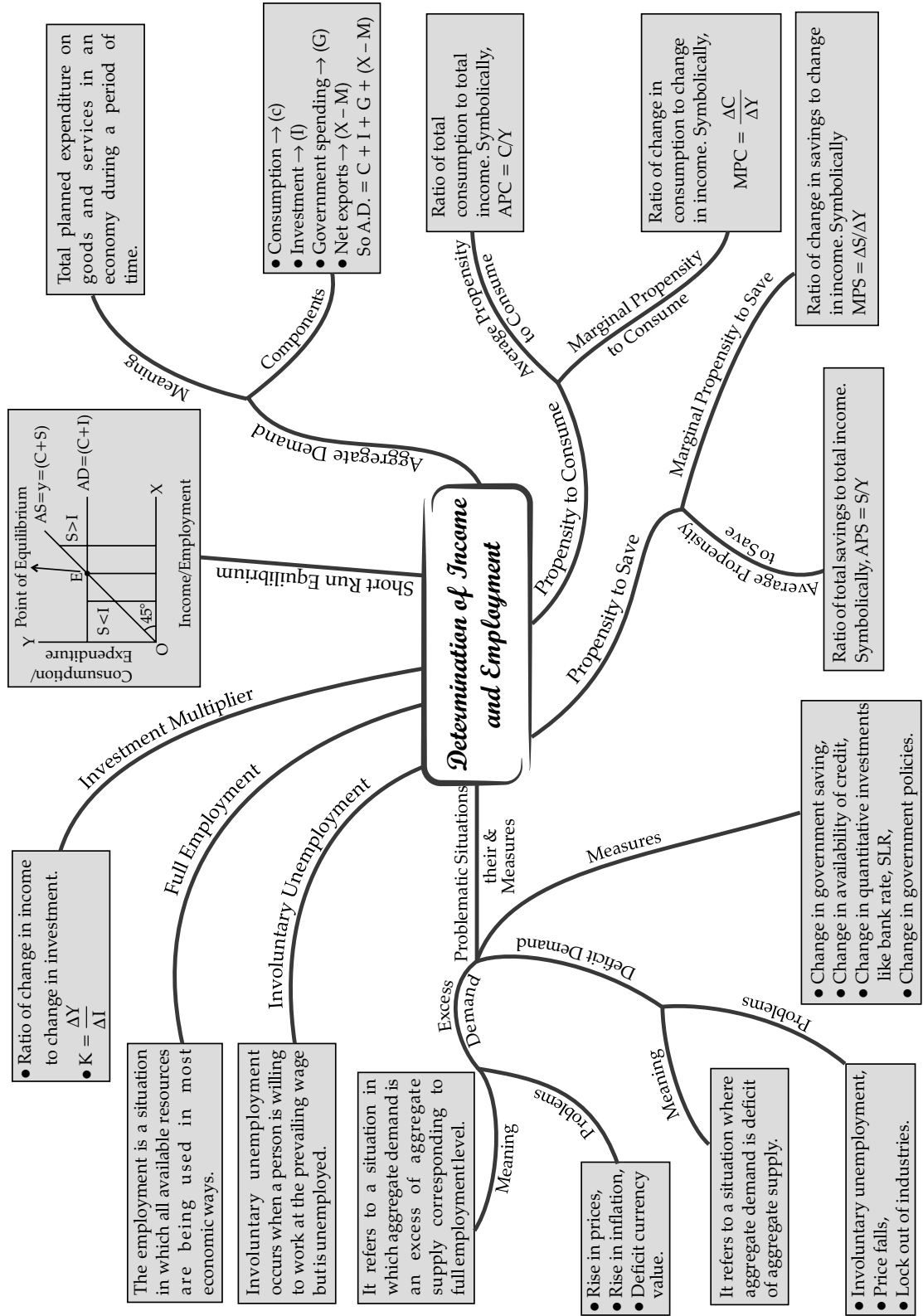
UNIT 1 : NATIONAL INCOME AND RELATED AGGREGATES



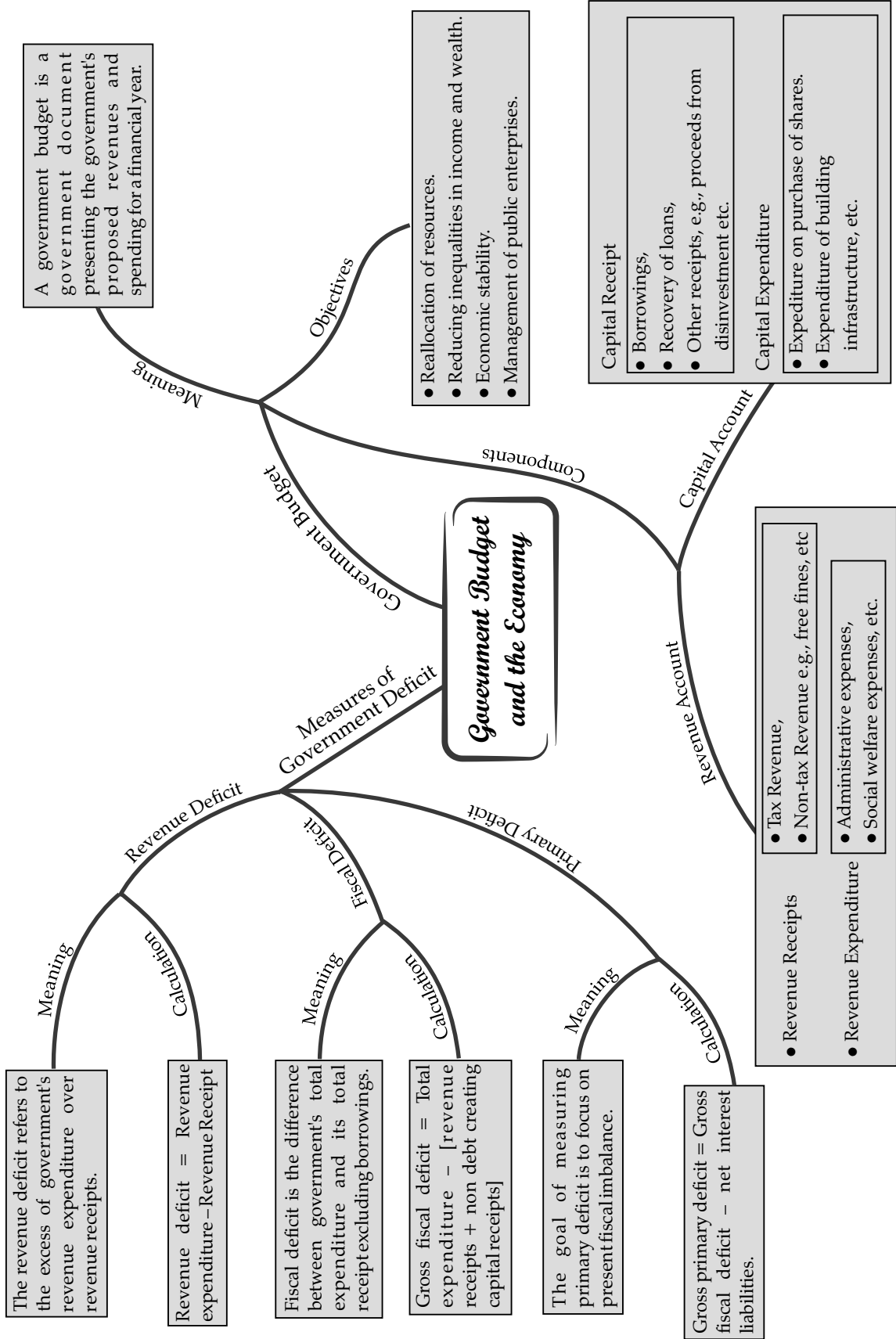
UNIT 2 : MONEY AND BANKING



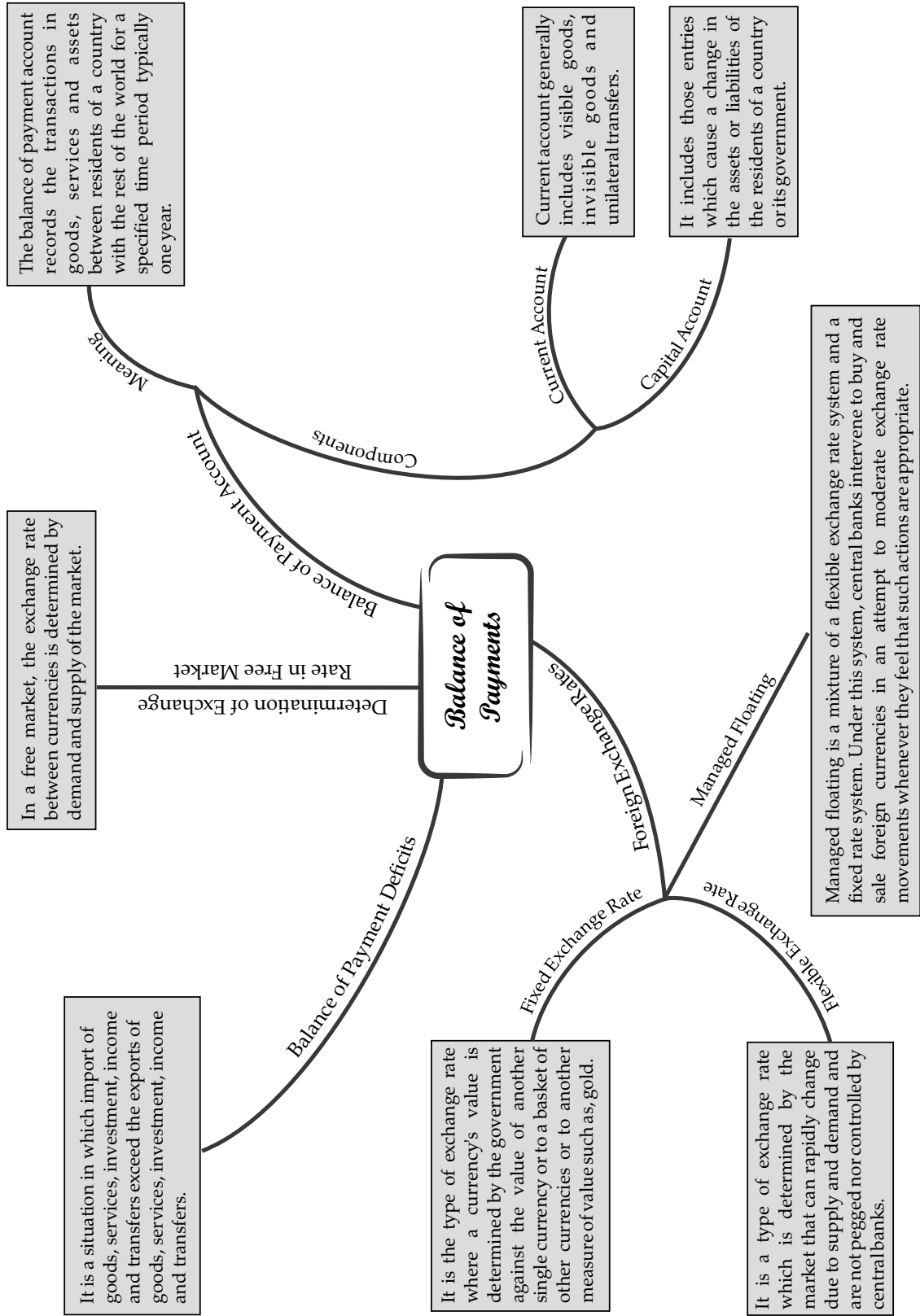
UNIT 3 : DETERMINATION OF INCOME AND EMPLOYMENT



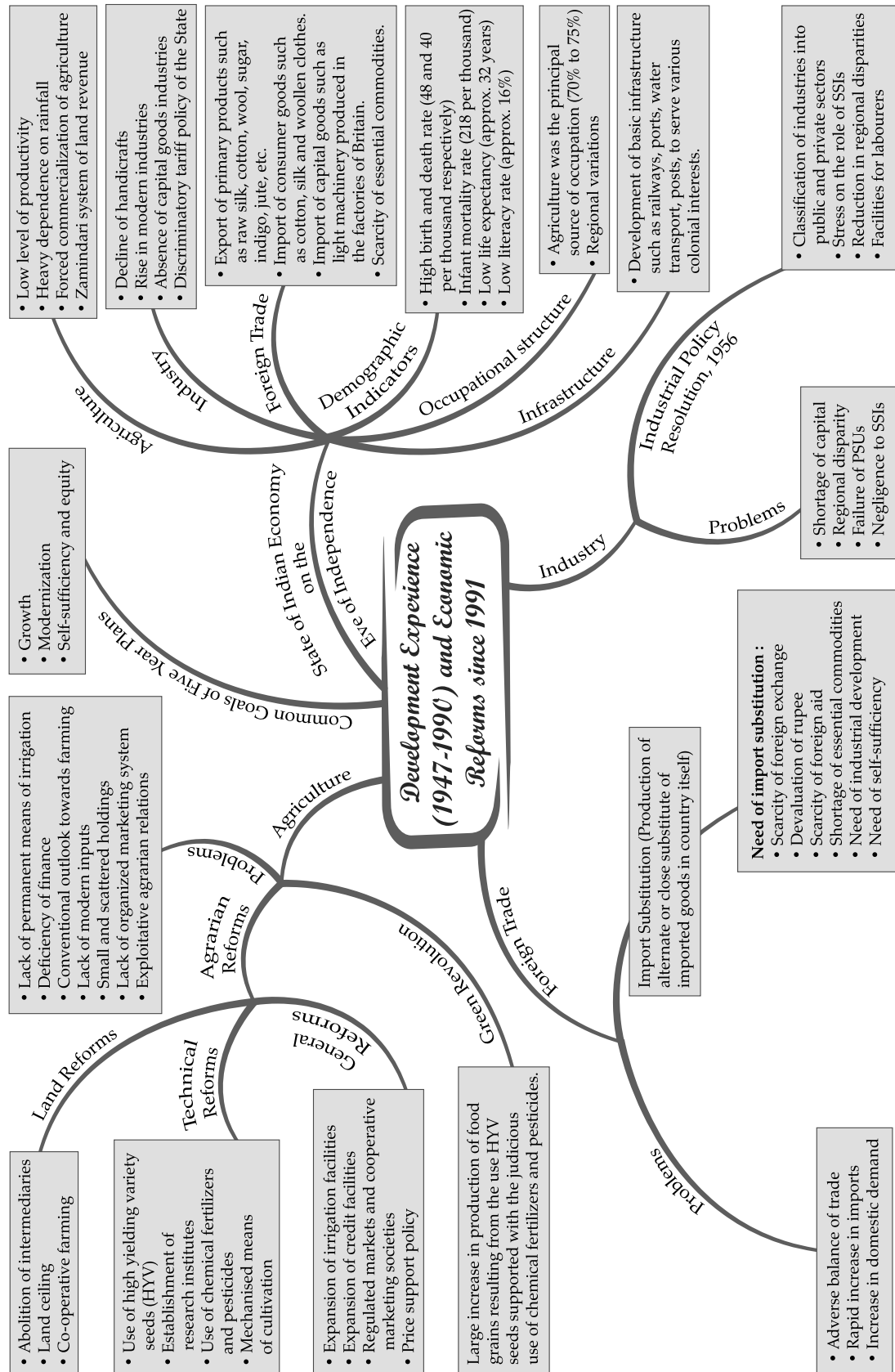
UNIT 4 : GOVERNMENT BUDGET AND THE ECONOMY



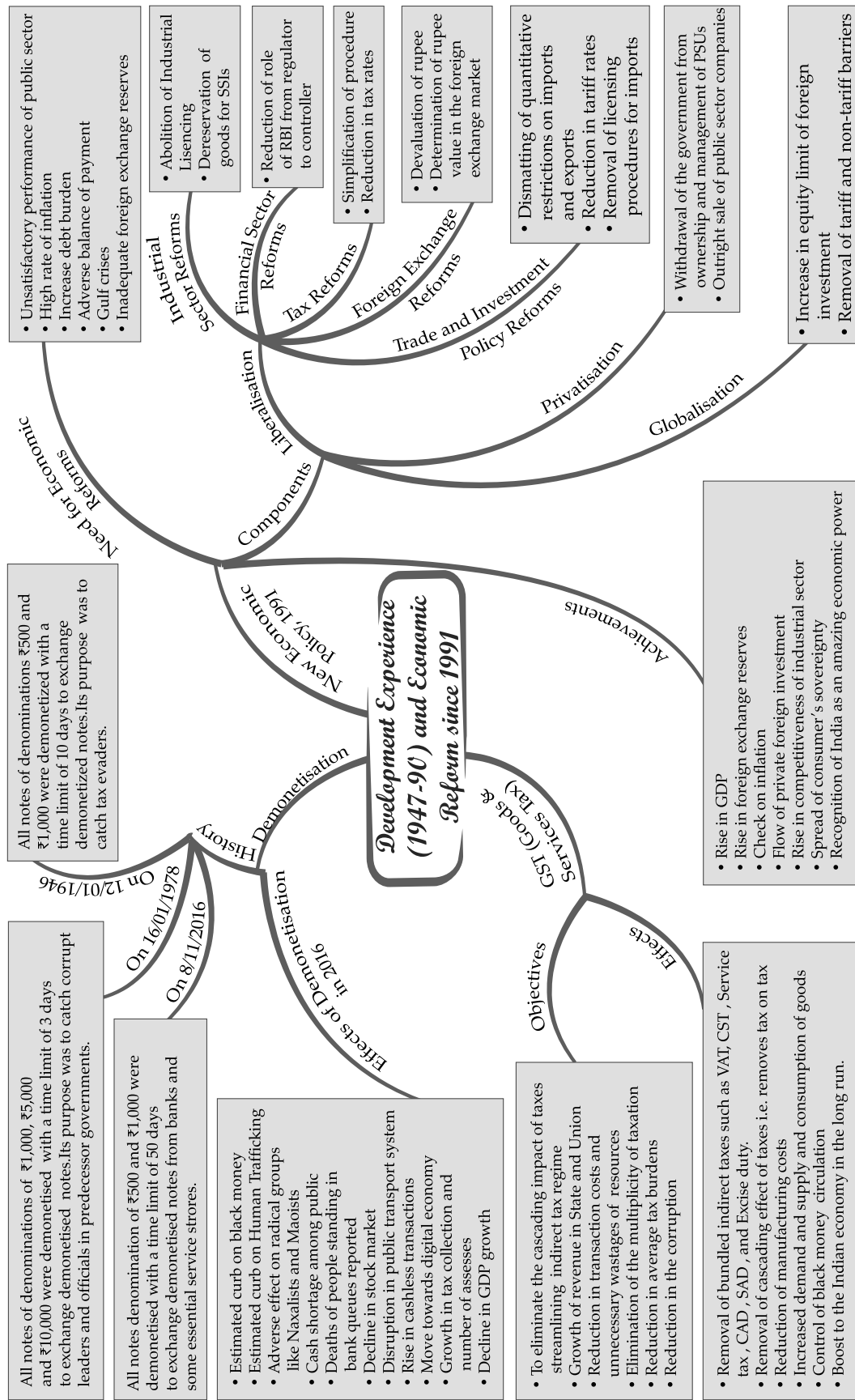
UNIT 5 : BALANCE OF PAYMENTS



UNIT 6 : DEVELOPMENT EXPERIENCE (1947-90) AND ECONOMIC REFORMS SINCE 1991 TOPICS: 1-5

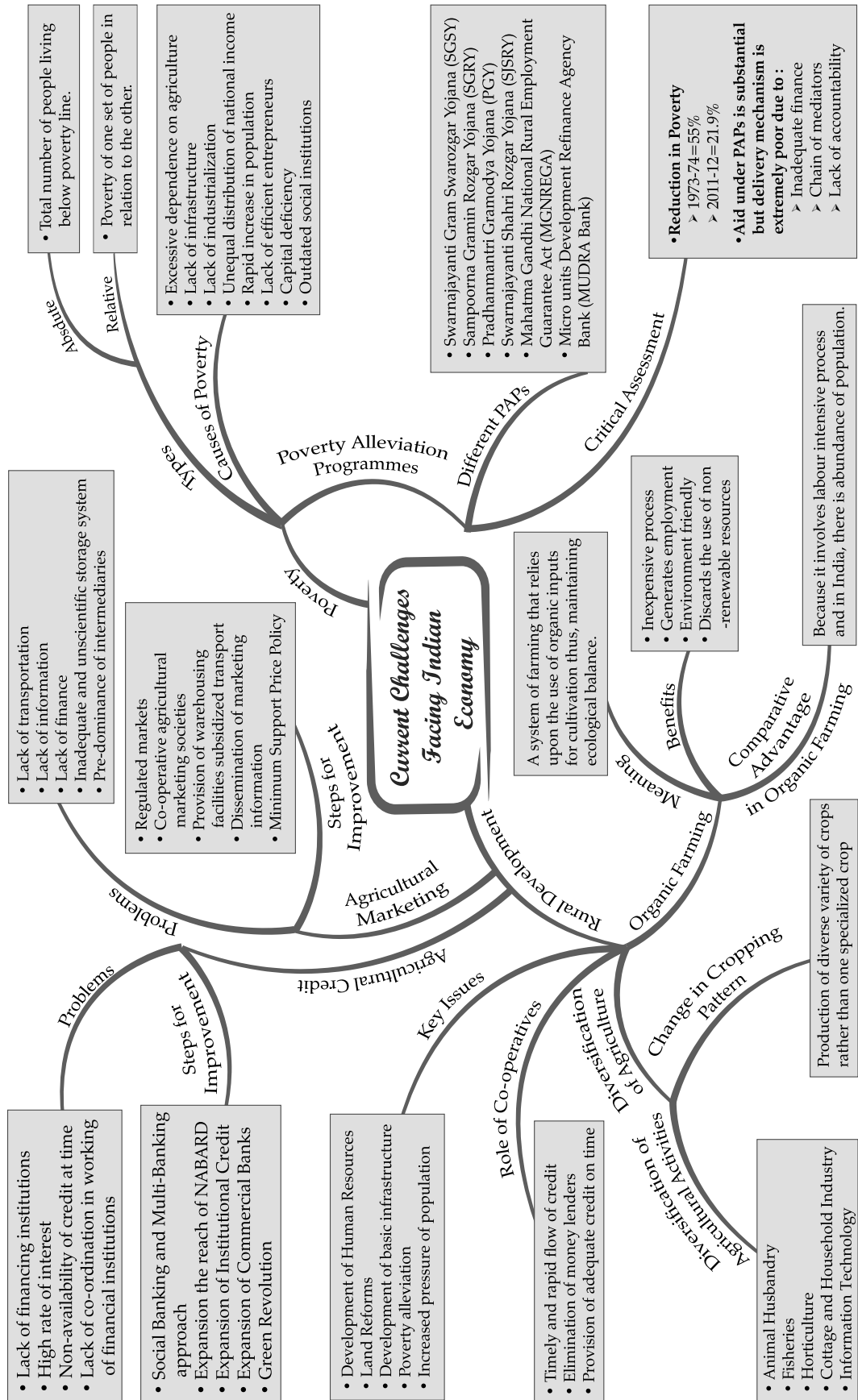


UNIT 6 : DEVELOPMENT EXPERIENCE (1947-90) AND ECONOMIC REFORMS SINCE 1991 TOPIC: 6

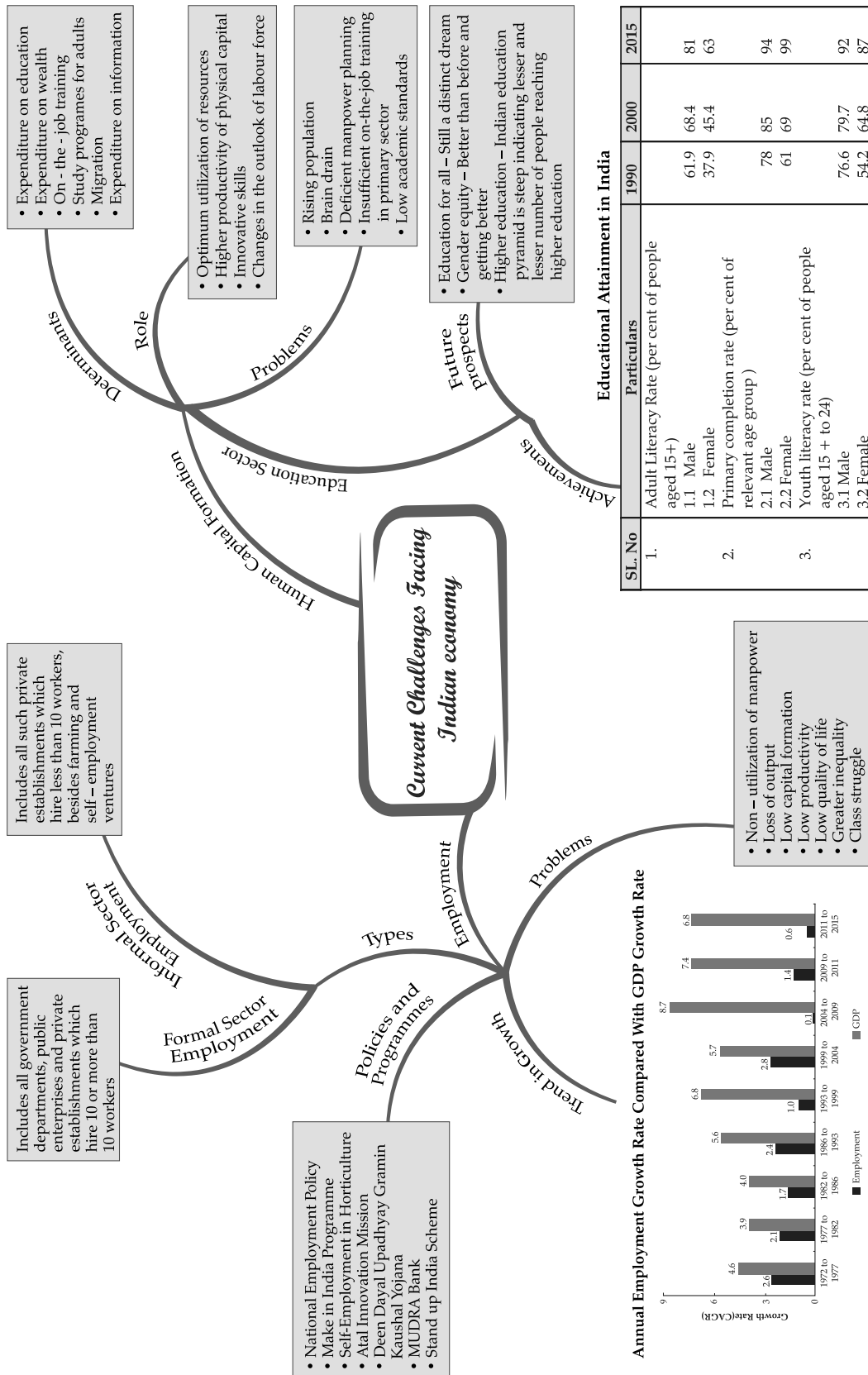


UNIT 7 : CURRENT CHALLENGES FACING INDIAN ECONOMY

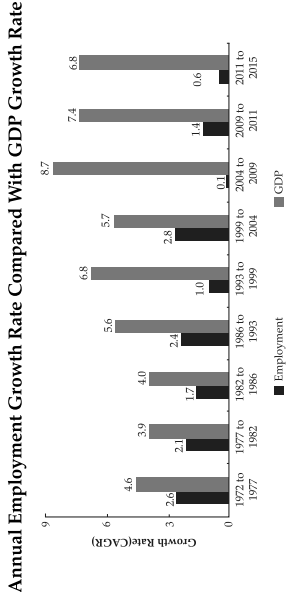
TOPICS: 1 & 2



UNIT 7 : CURRENT CHALLENGES FACING INDIAN ECONOMY TOPICS: 3 & 4

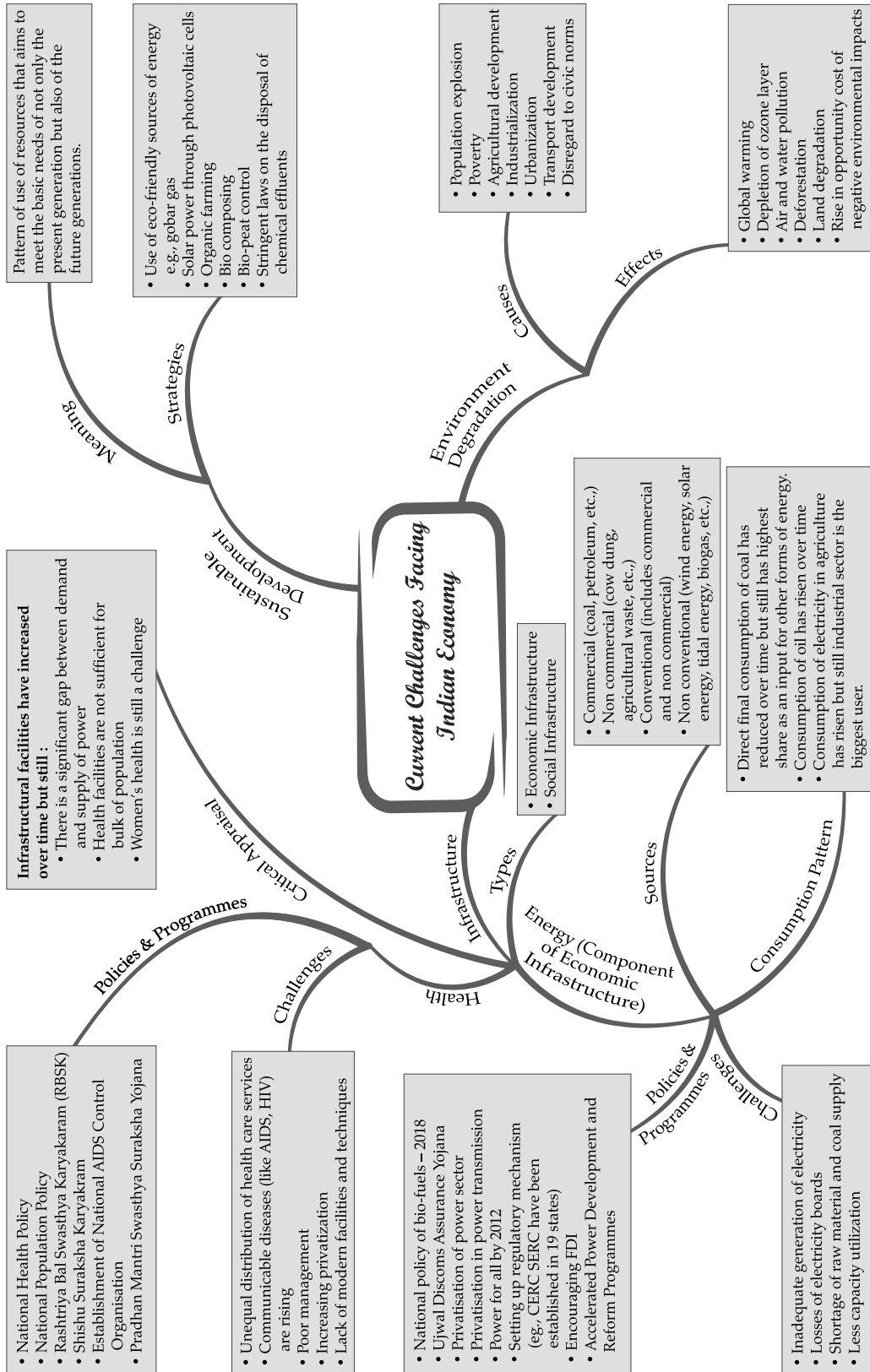


SL. No	Particulars	1990	2000	2015
1.	Adult Literacy Rate (per cent of people aged 15+)			
	1.1 Male	61.9	68.4	81
	1.2 Female	37.9	45.4	63
2.	Primary completion rate (per cent of relevant age group)			
	2.1 Male	78	85	94
3.	Youth literacy rate (per cent of people aged 15 + to 24)			
	3.1 Male	76.6	79.7	92
	3.2 Female	54.2	64.8	87

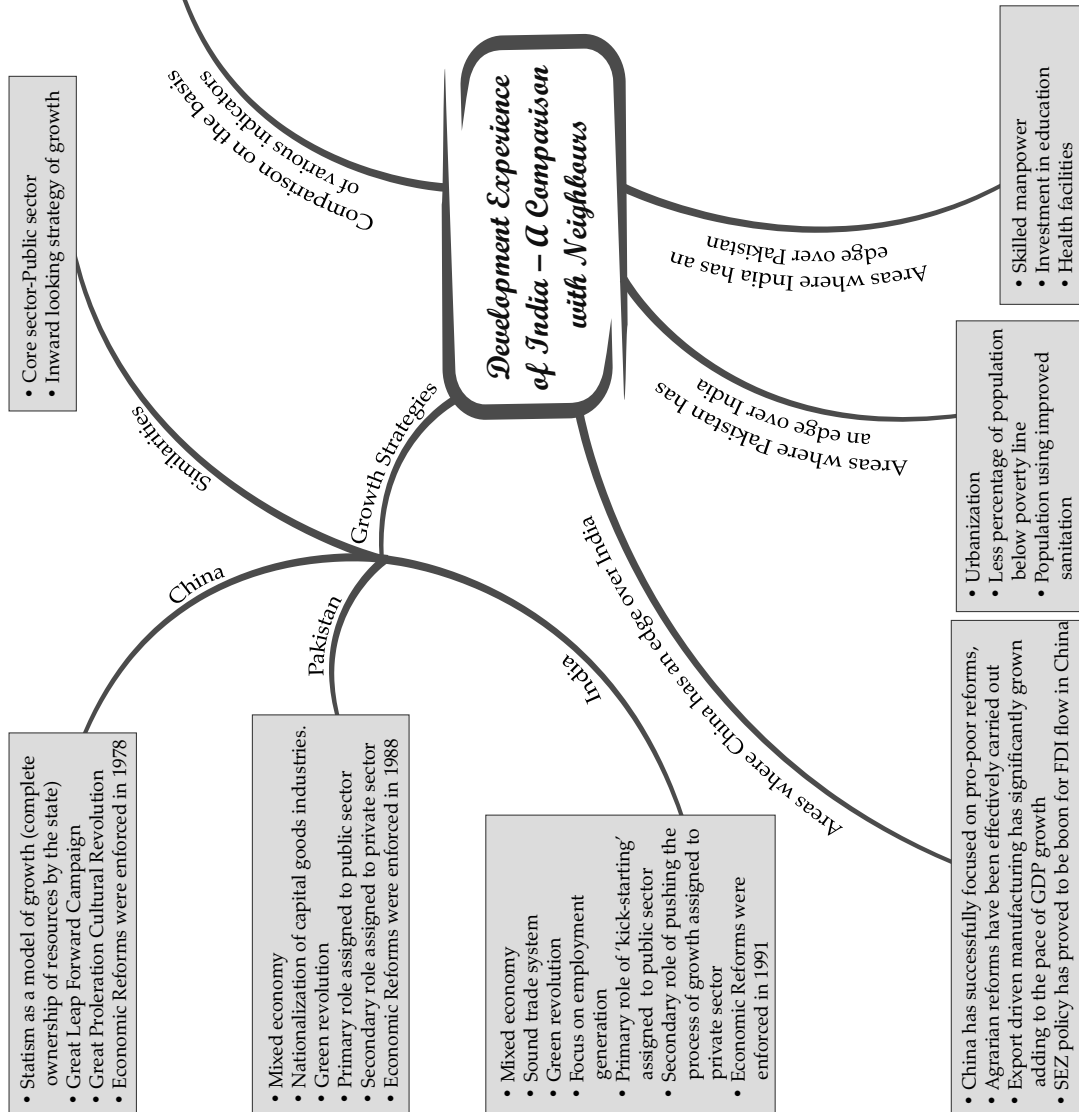


UNIT 7 : CURRENT CHALLENGES FACING INDIAN ECONOMY

TOPICS: 5 & 6



UNIT 8 : DEVELOPMENT EXPERIENCE OF INDIA : A COMPARISON WITH NEIGHBOURS



Areas where China has an edge over India

- China has successfully focused on pro-poor reforms,
- Agrarian reforms have been effectively carried out
- Export driven manufacturing has significantly grown adding to the pace of GDP growth
- SEZ policy has proved to be boon for FDI flow in China

Areas where Pakistan has an edge over India

- Urbanization
- Less percentage of population below poverty line
- Population using improved sanitation

Areas where India has an edge over Pakistan

- Skilled manpower
- Investment in education
- Health facilities

Comparison on the basis of Various Indicators

- Core sector-Public sector
- Inward looking strategy of growth